



Unggul, Inklusif
dan Berdampak

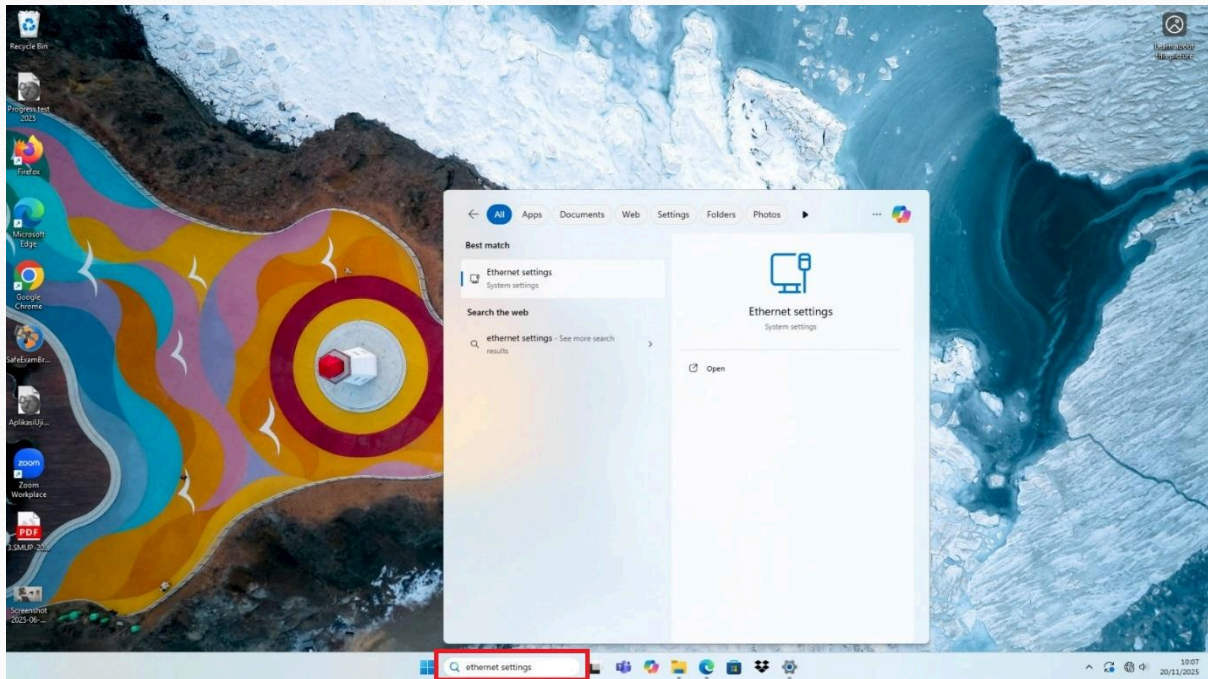
psitd
DIREKTORAT
PERENCANAAN, SISTEM INFORMASI,
DAN TRANSFORMASI DIGITAL

Cara Instalasi Sertifikat Internet di Windows 11 (LABKOMP)

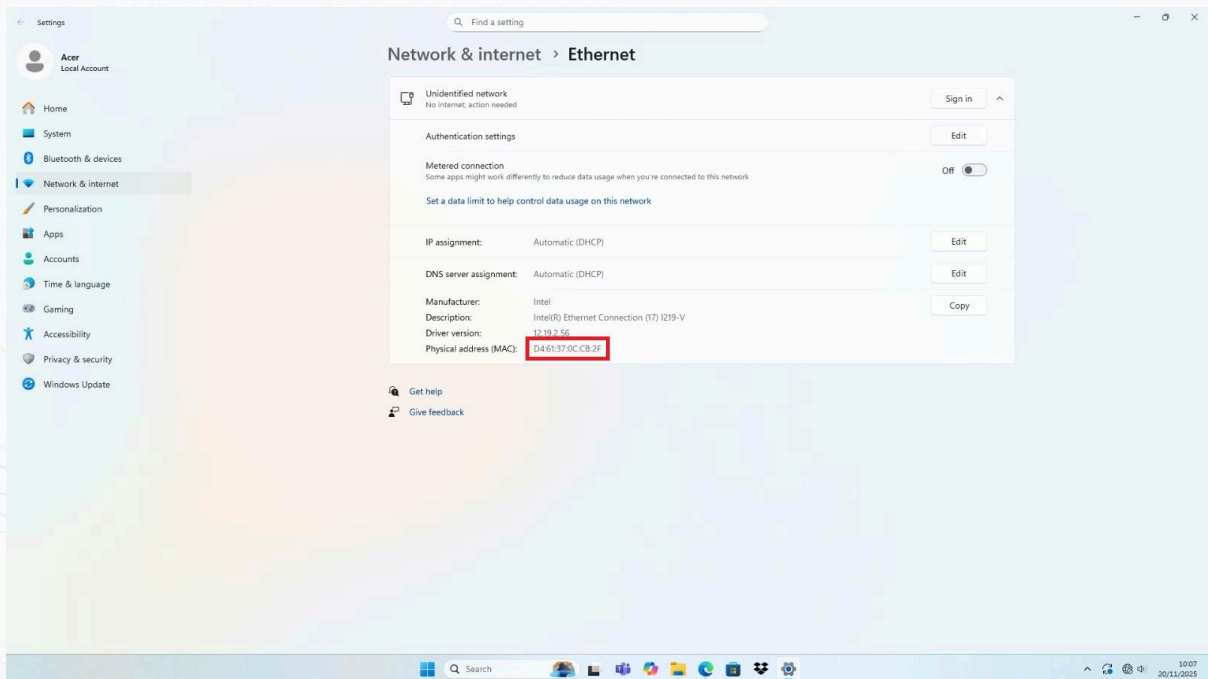


Cara Instalasi Sertifikat Internet di Windows 11

1. Masukkan flashdisk ke PC.
2. Buka kolom pencarian Windows, ketik *Ethernet*, lalu tekan **Enter**.

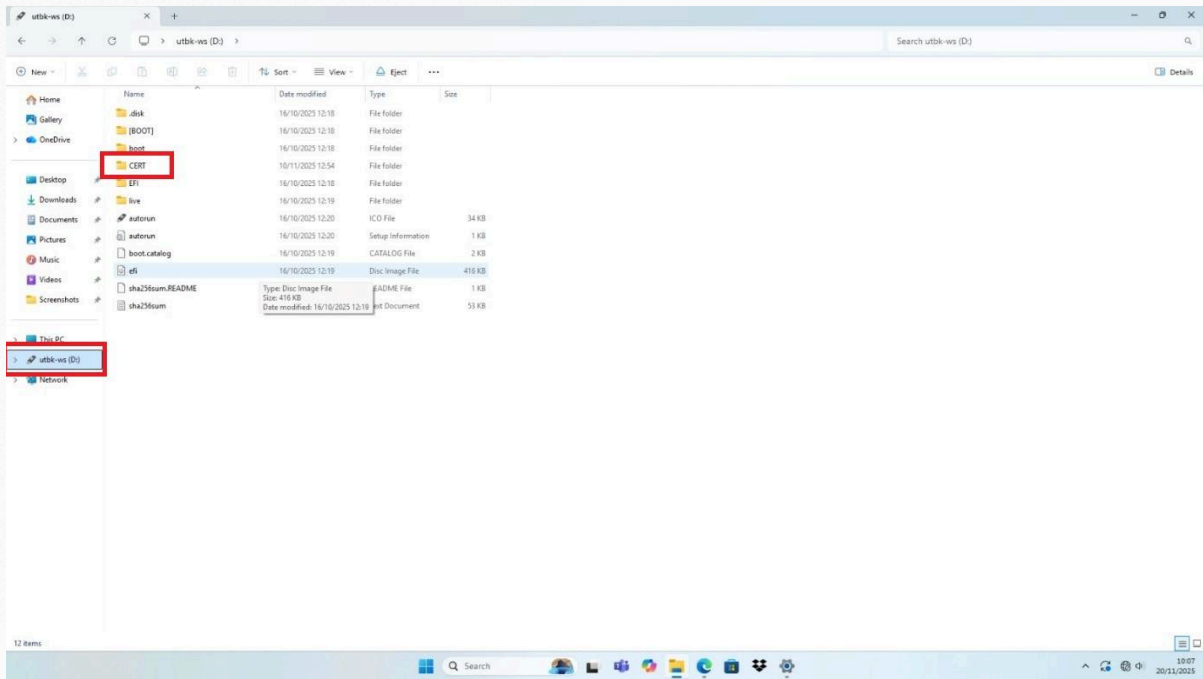


3. Periksa alamat MAC pada PC.

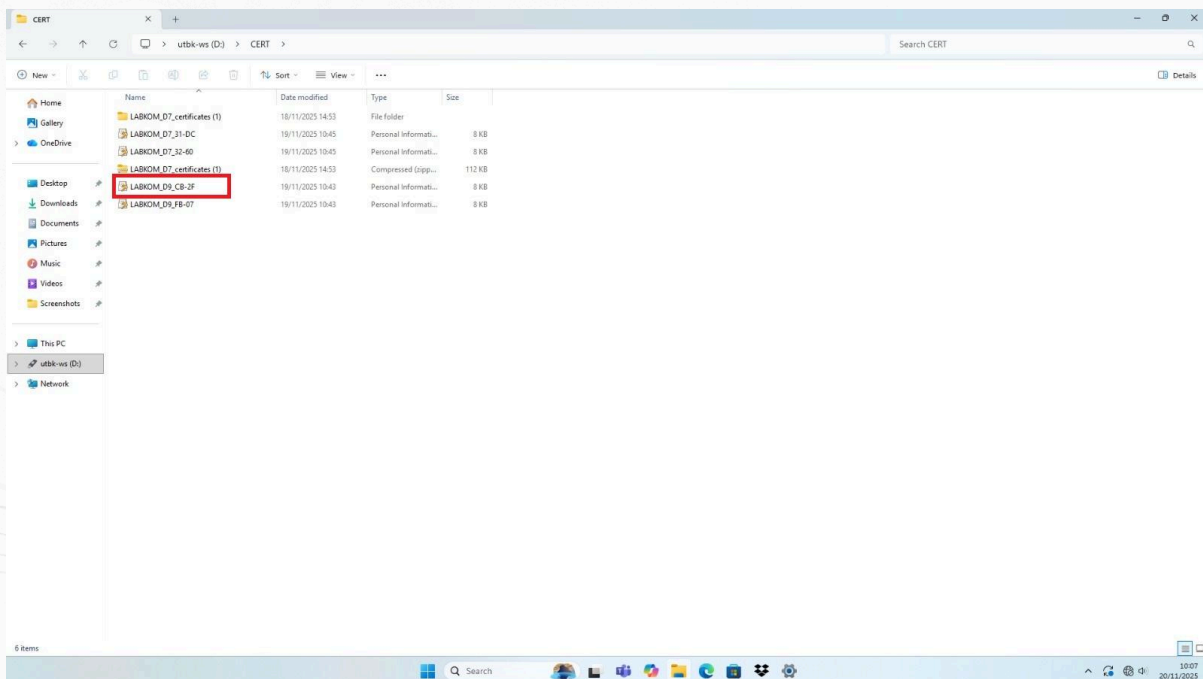




4. Buka **File Explorer**, masuk ke flashdisk, lalu klik dua kali pada file sertifikat (*cert*).

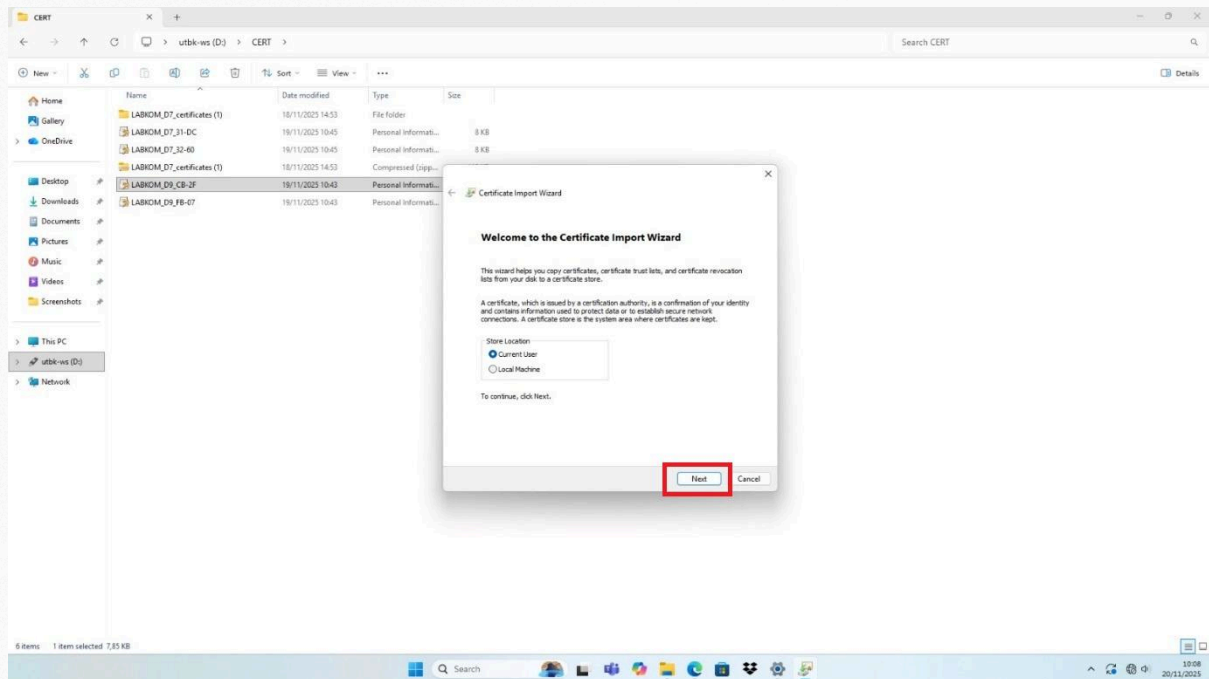


5. Cari MAC address yang 4 angka terakhirnya sama persis pada Ethernet, lalu klik dua kali..

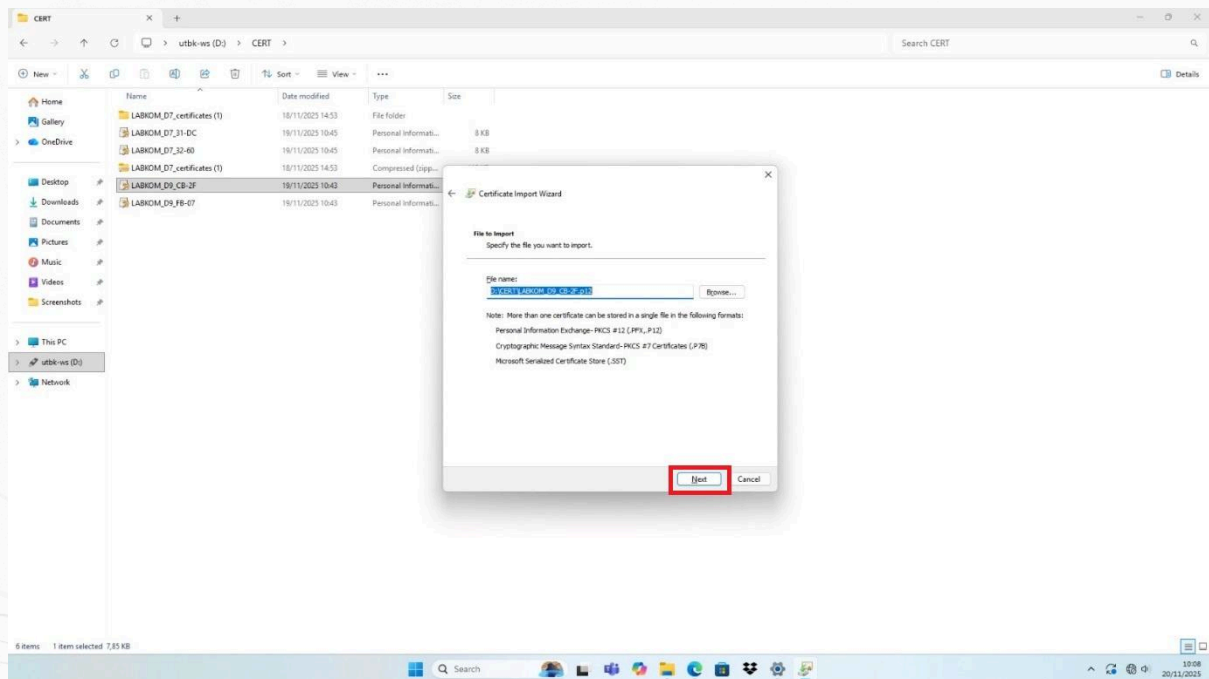




6. Setelah muncul tampilan instalasi, klik **Next**.

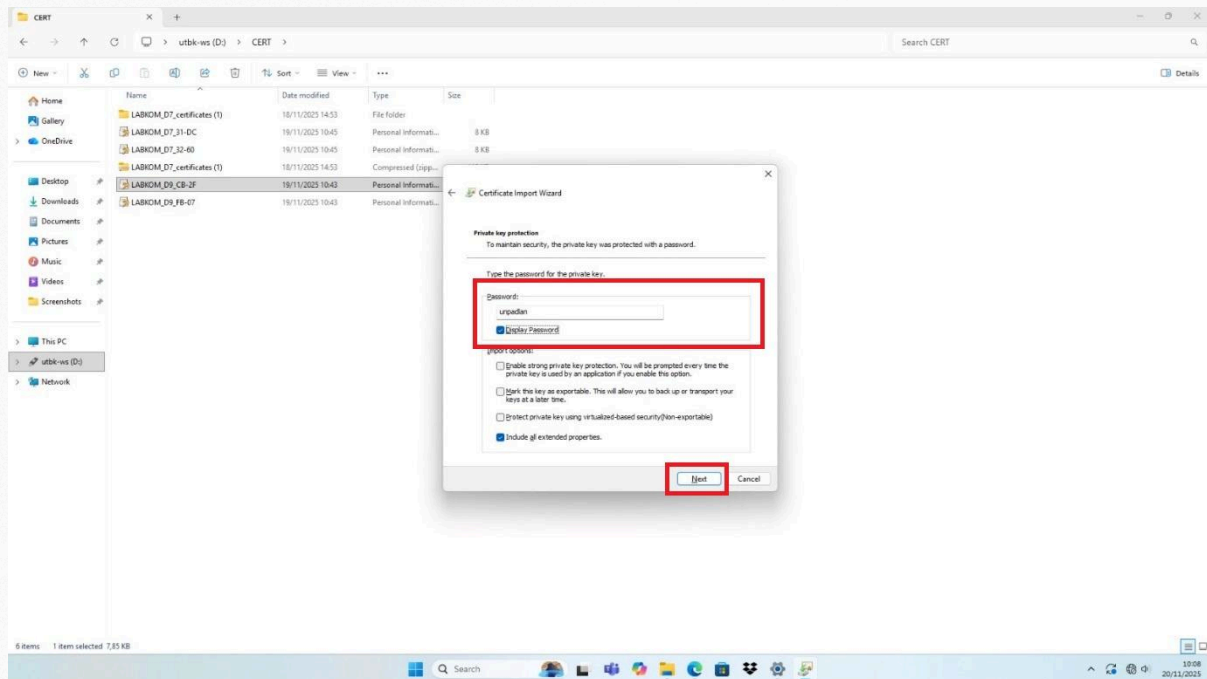


7. Klik **Next**

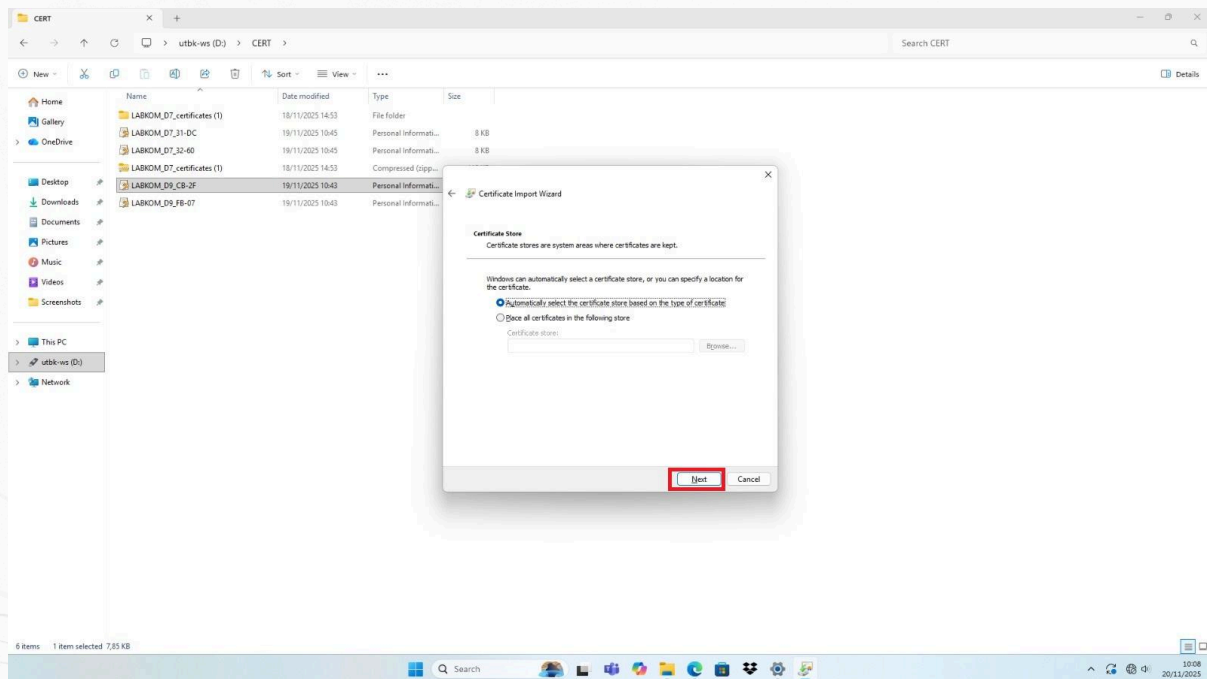




8. Masukkan password **unpadlan**, lalu klik **Next**.

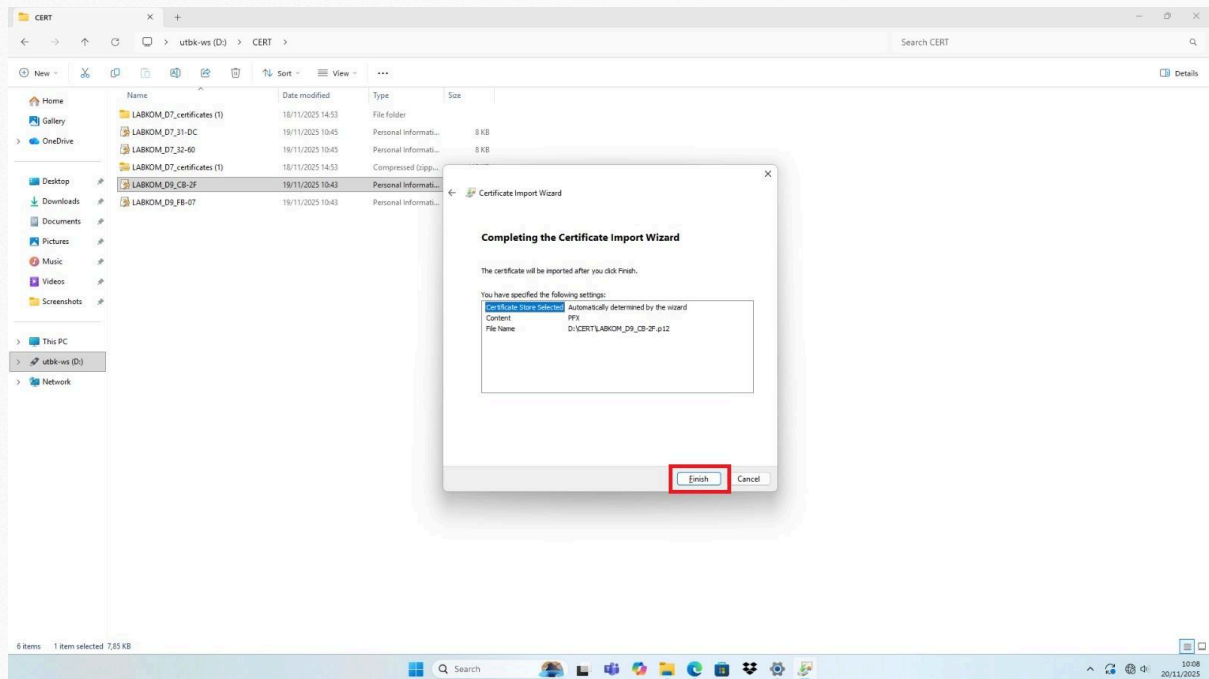


9. Klik **Next**.

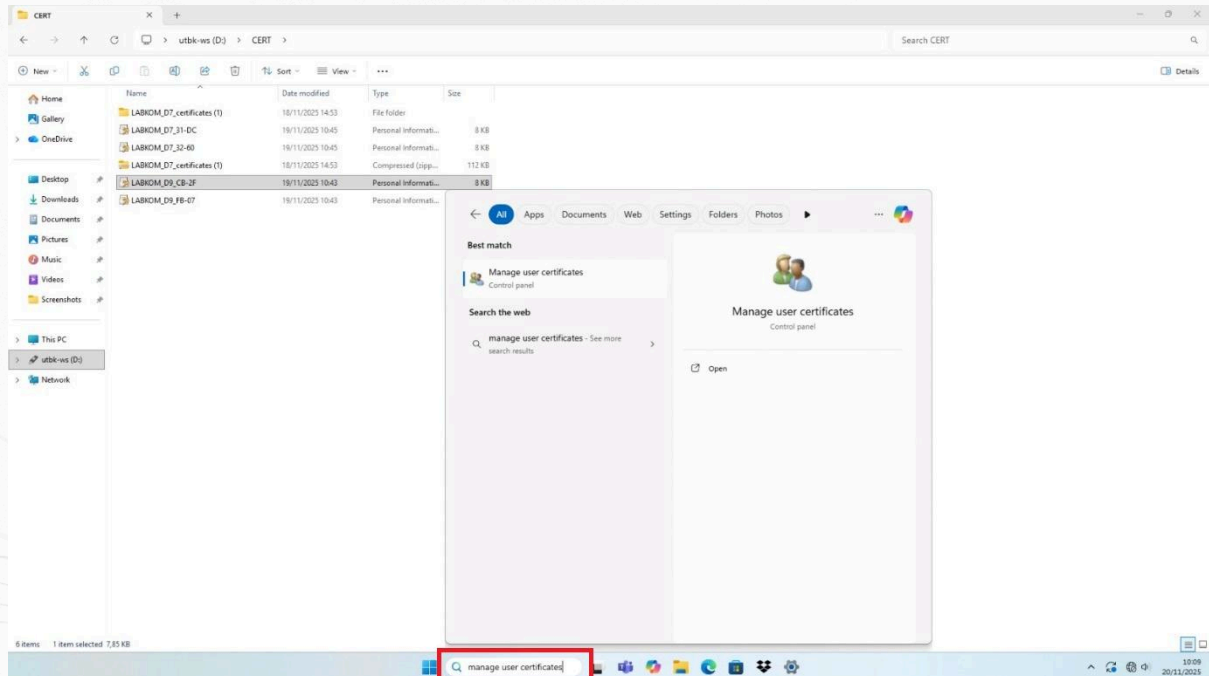




10. Klik **Finish**.

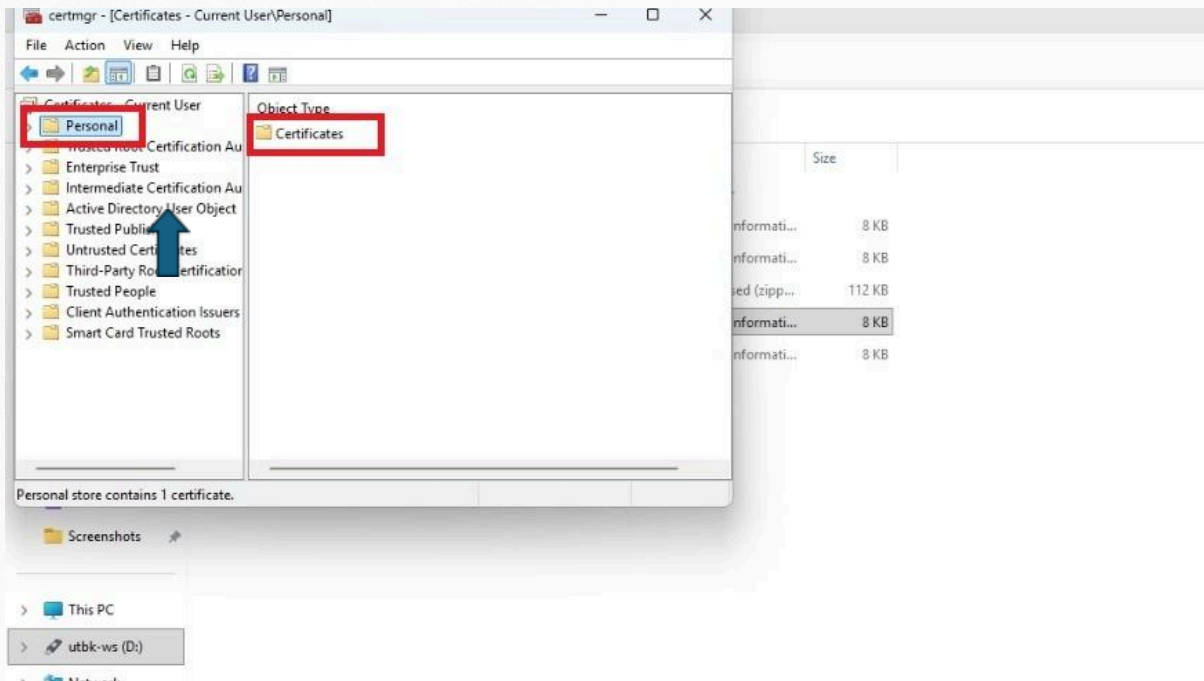


11. Buka kolom pencarian Windows, ketik *Manage user certificates*, lalu tekan **Enter**.

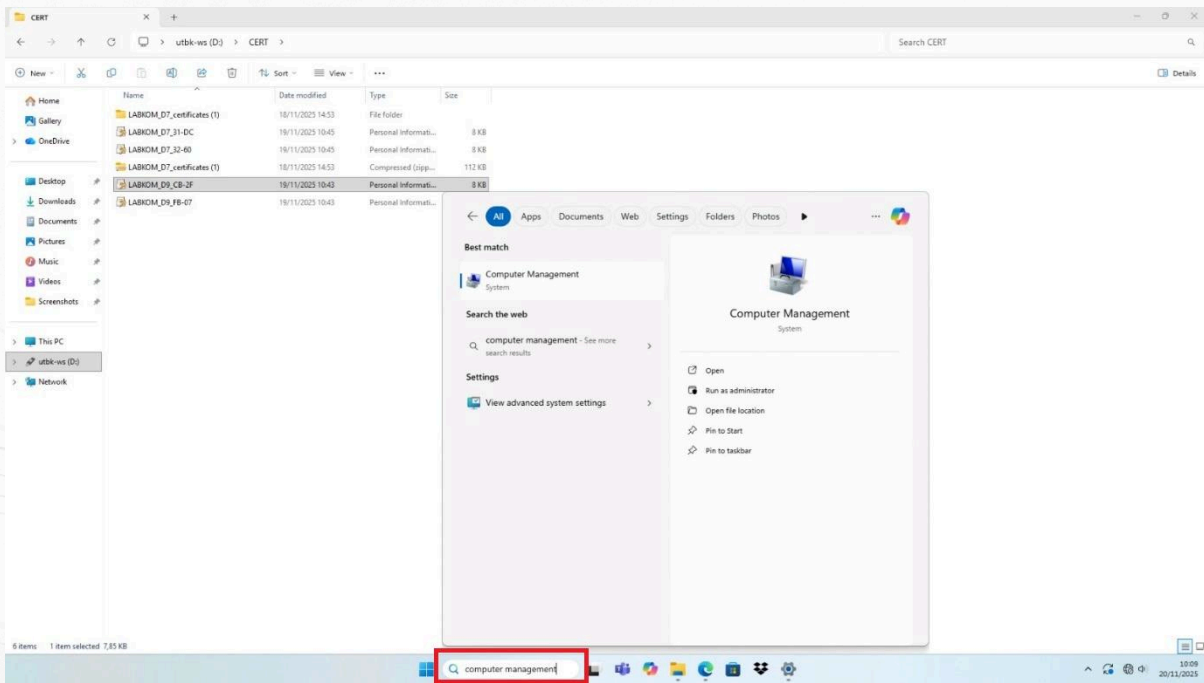




12. Pada jendela yang muncul, klik **Personal**; jika sertifikat sudah terpasang, akan muncul **Certificates** di bagian kanan.

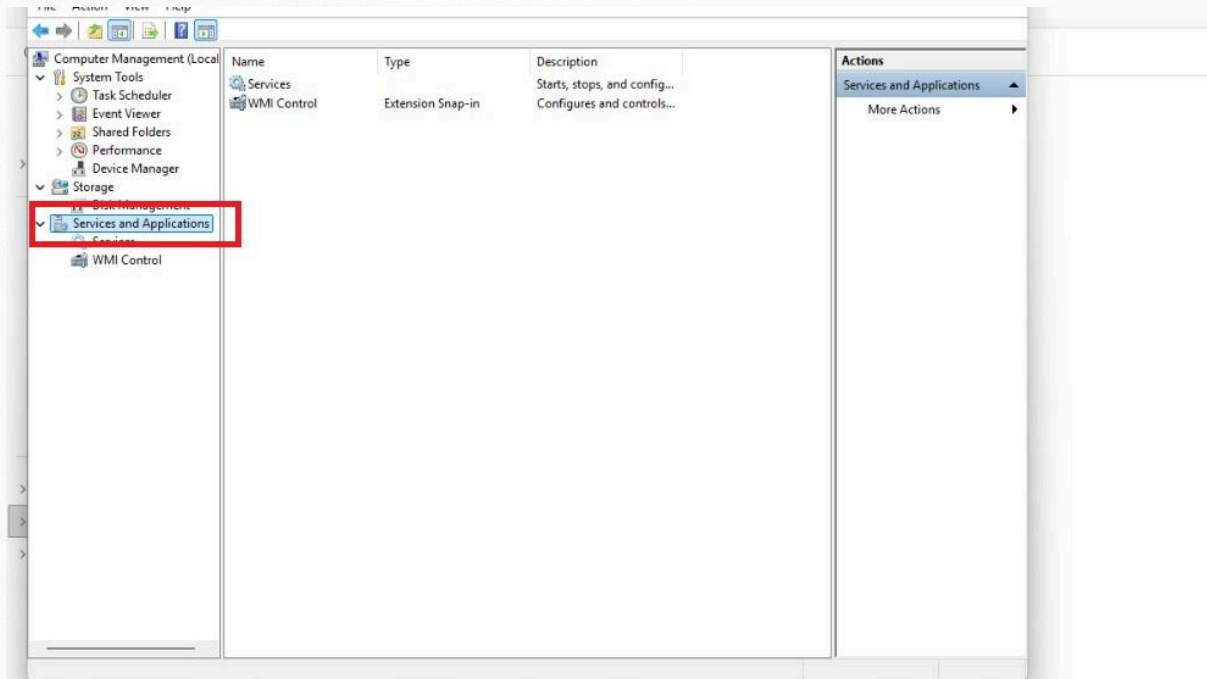


13. Buka kolom pencarian Windows, ketik *Computer Management*, lalu tekan **Enter**.

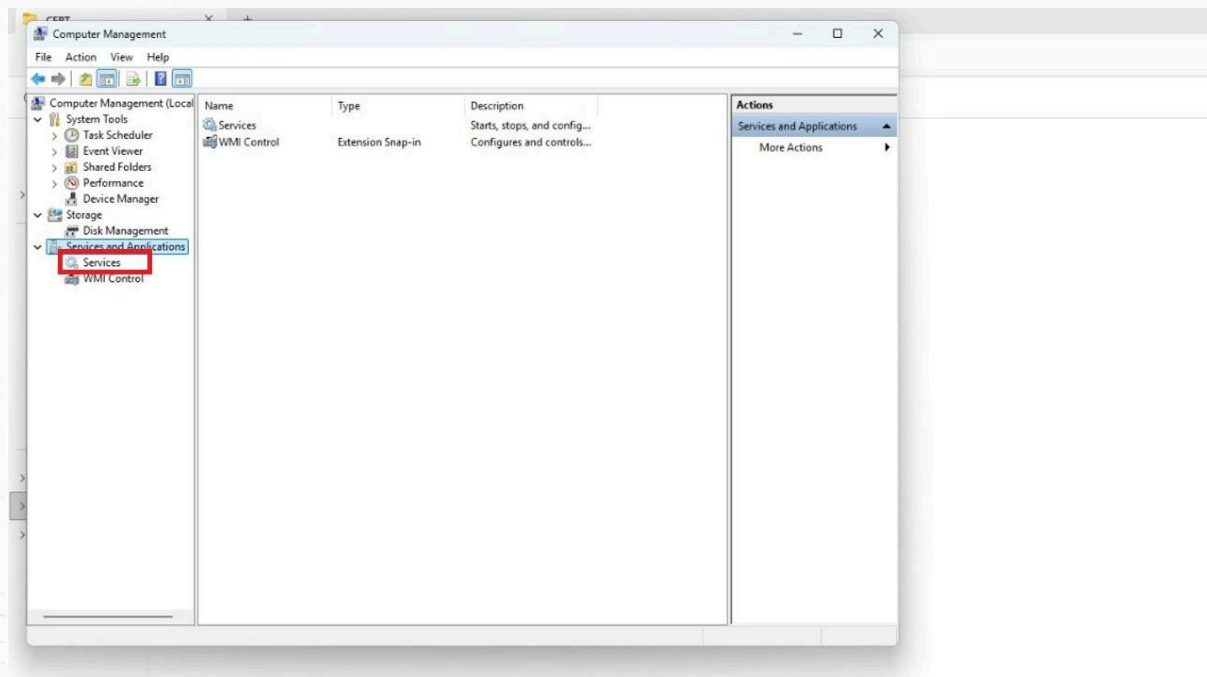




14. Klik **Services and Applications**.

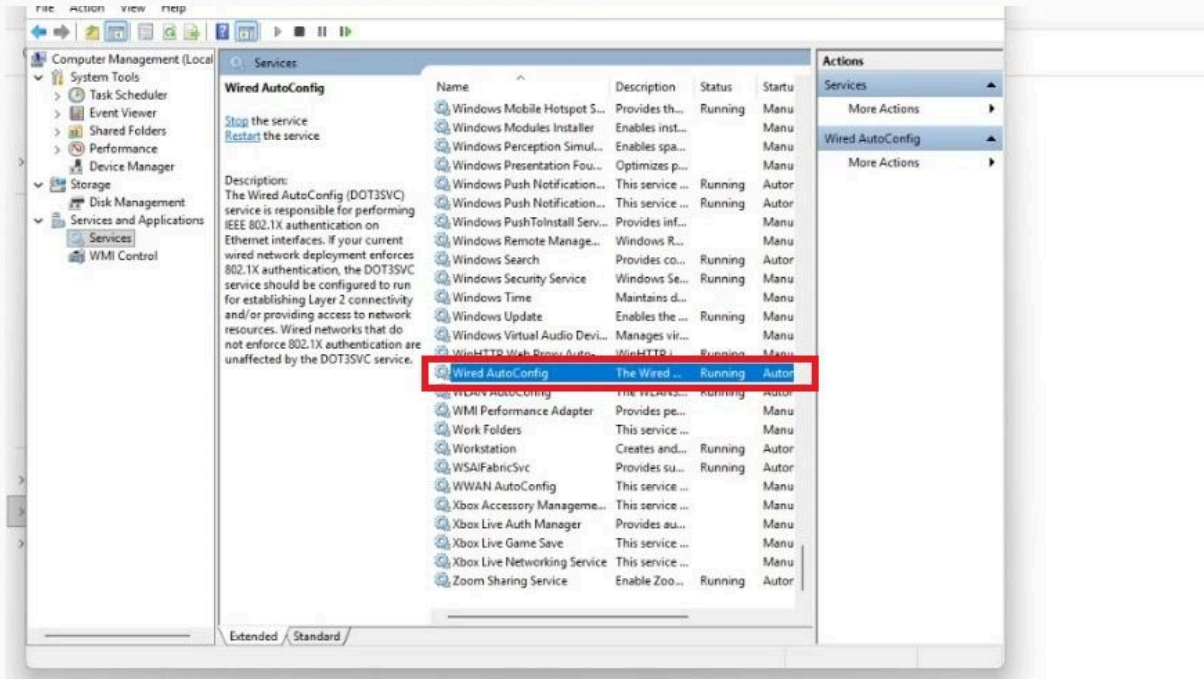


15. Klik **Services**.

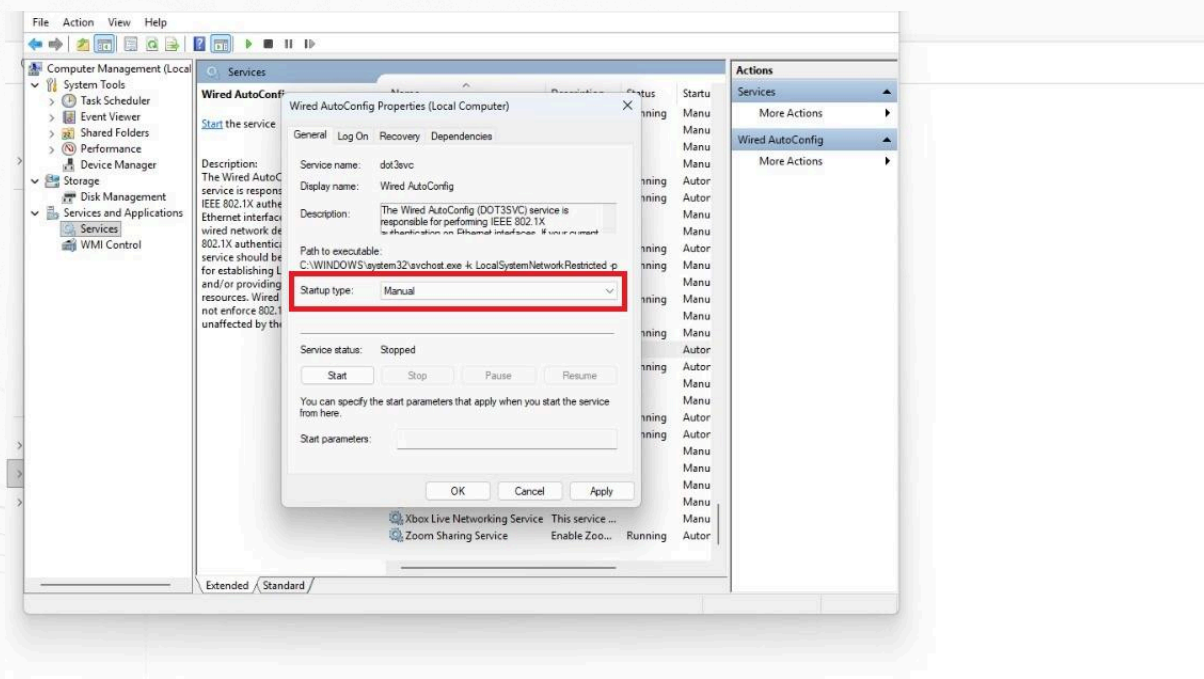




16. Cari dan klik **Wired AutoConfig** di daftar layanan, lalu klik dua kali untuk membukanya.

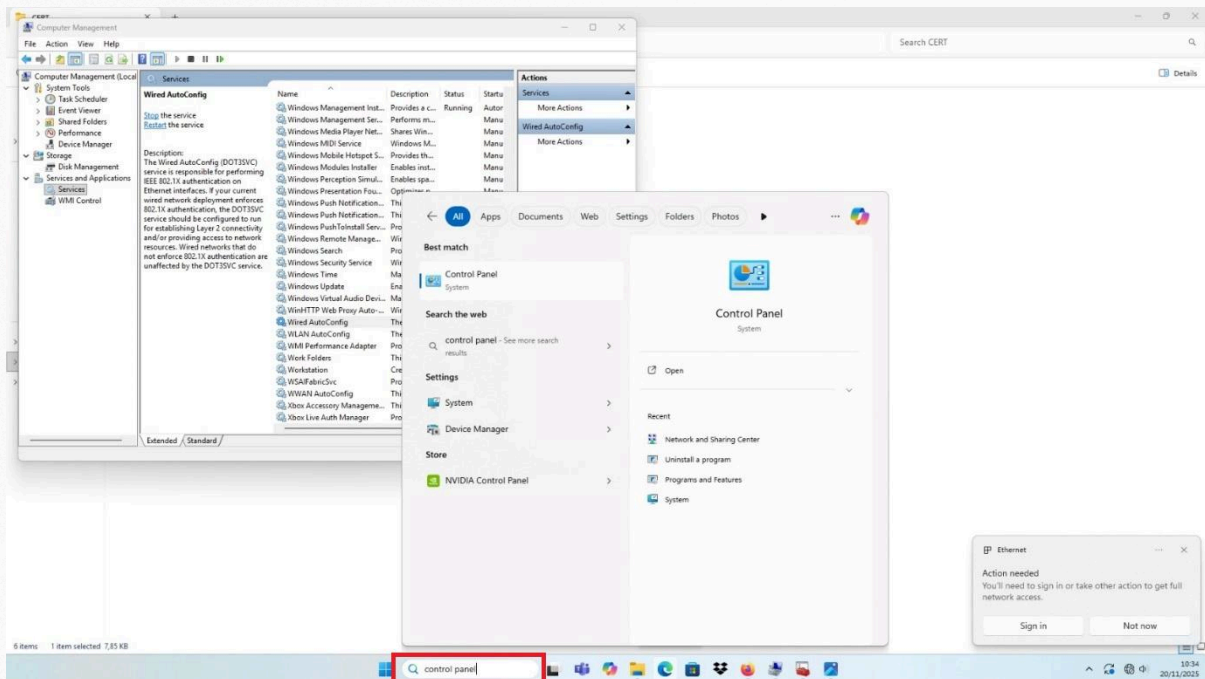


17. Ubah **Startup type** dari Manual menjadi **Automatic**, lalu klik **Start**, **Apply**, dan **OK**.

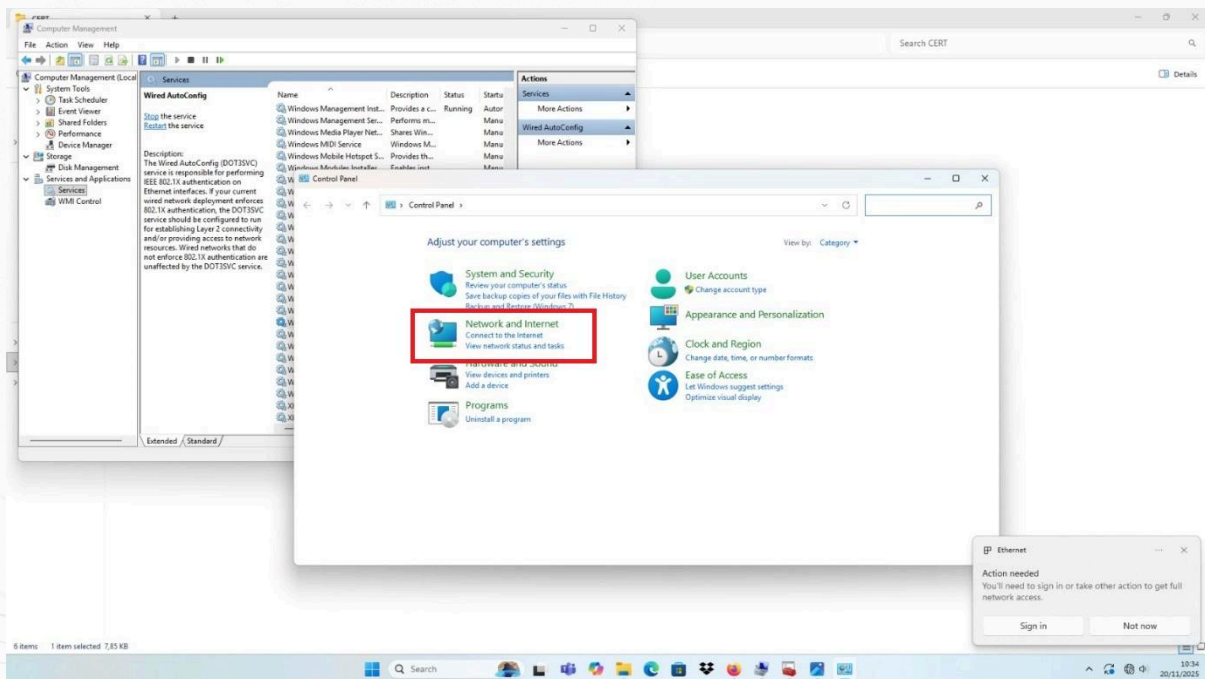




18. Buka kolom pencarian Windows, ketik *Control Panel*, lalu tekan **Enter**.

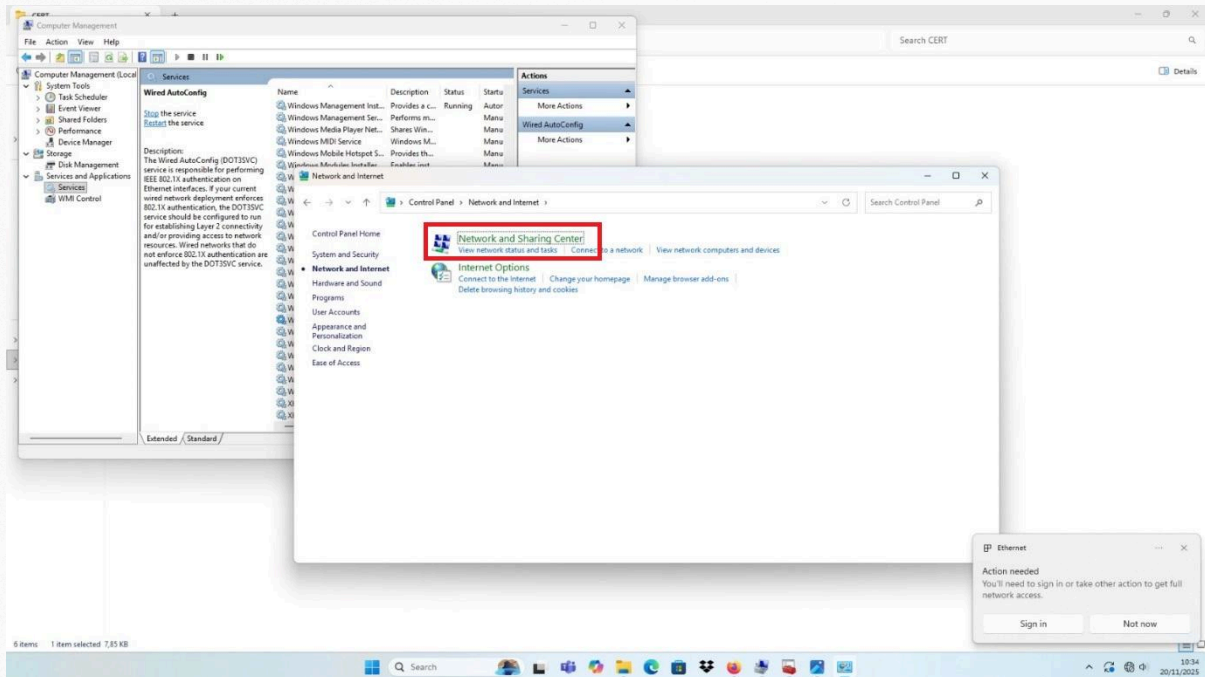


19. Klik **Network and Internet**.

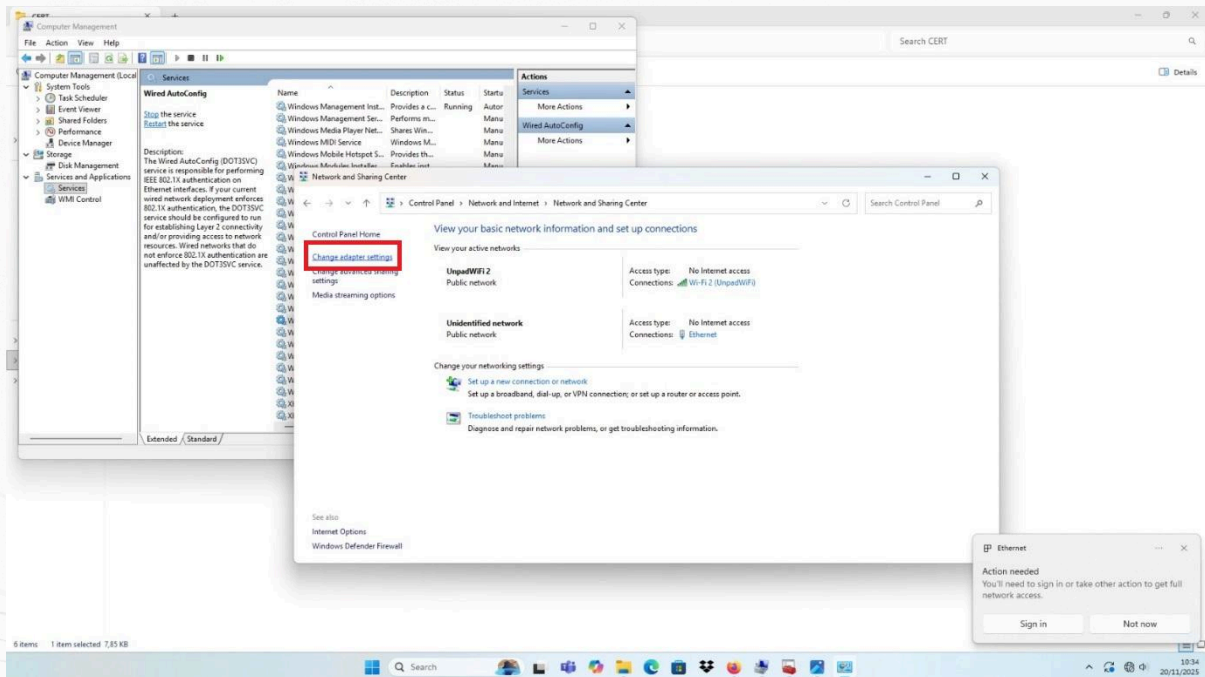




20. Klik Network and Sharing Center.

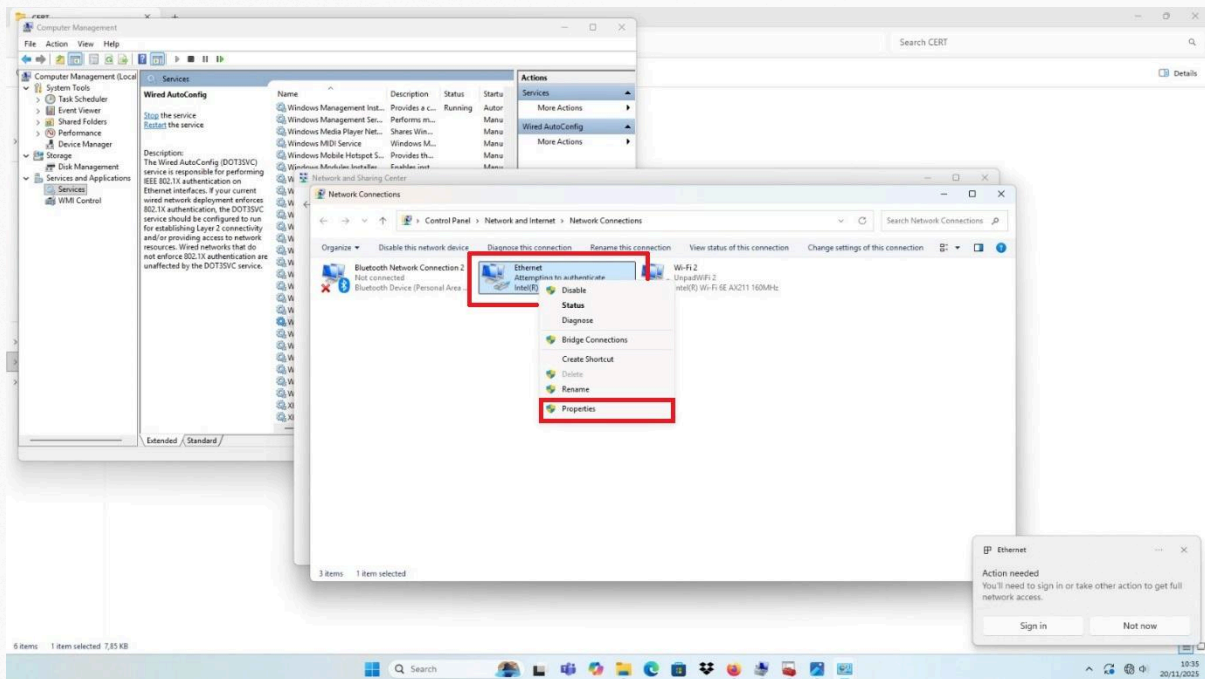


21. Klik Change adapter settings.

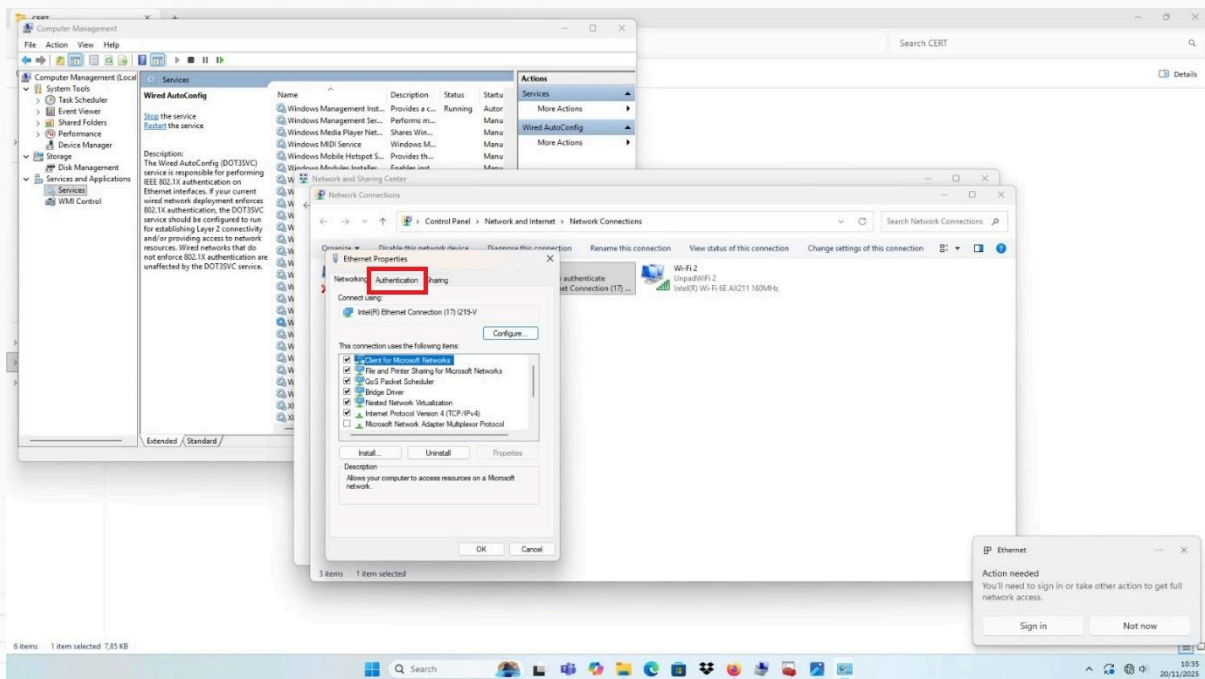




22. Klik kanan pada **Ethernet**, lalu pilih **Properties**.

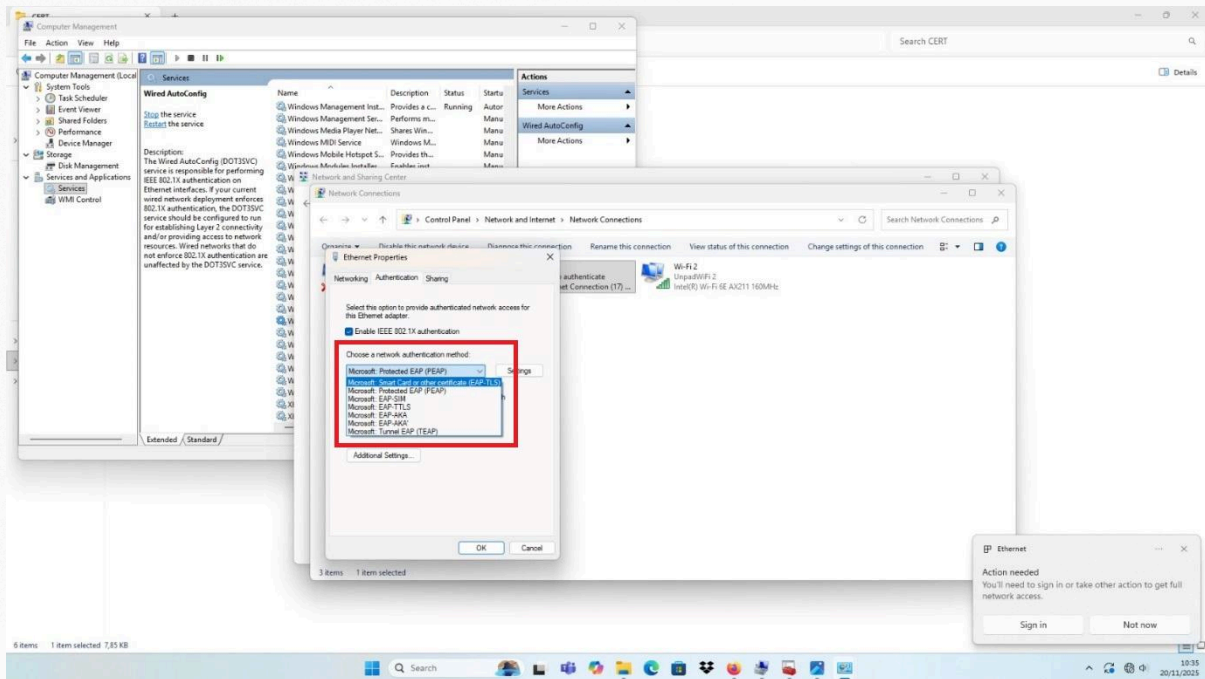


23. Klik tab **Authentication**.

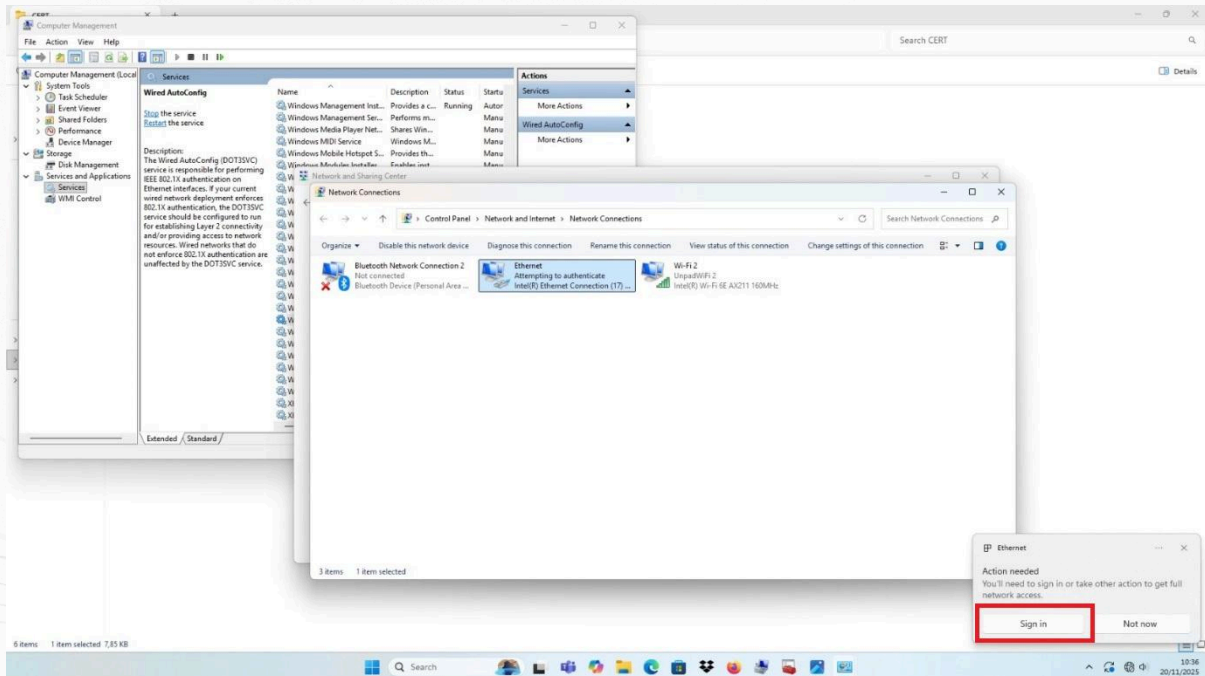




24. Ubah **Authentication Method** dari **EAP (PEAP)** menjadi **Smart Card or other certificate (EAP-TLS)**, lalu klik **OK**.

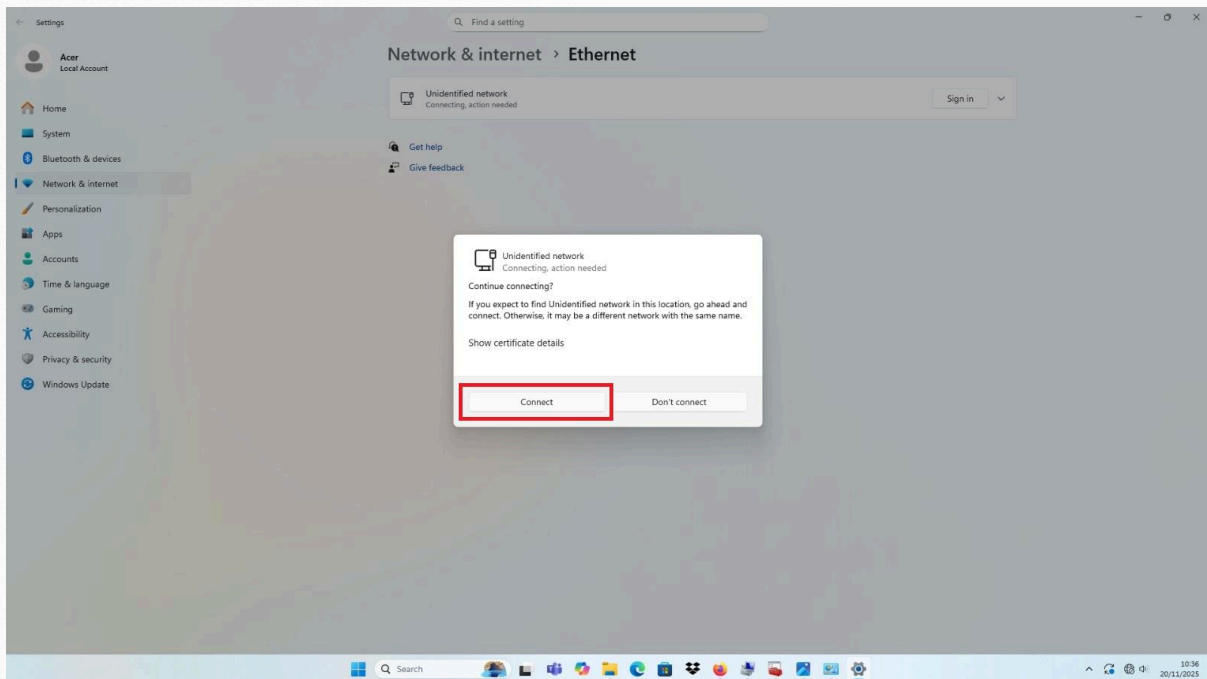


25. Klik **Sign In** di pojok kanan bawah.





26. Klik **Connect**. Tunggu hingga selesai.



27. Jika berhasil, akan muncul tanda koneksi aktif; setelah itu, koneksi sudah siap digunakan dan proses instalasi selesai.

